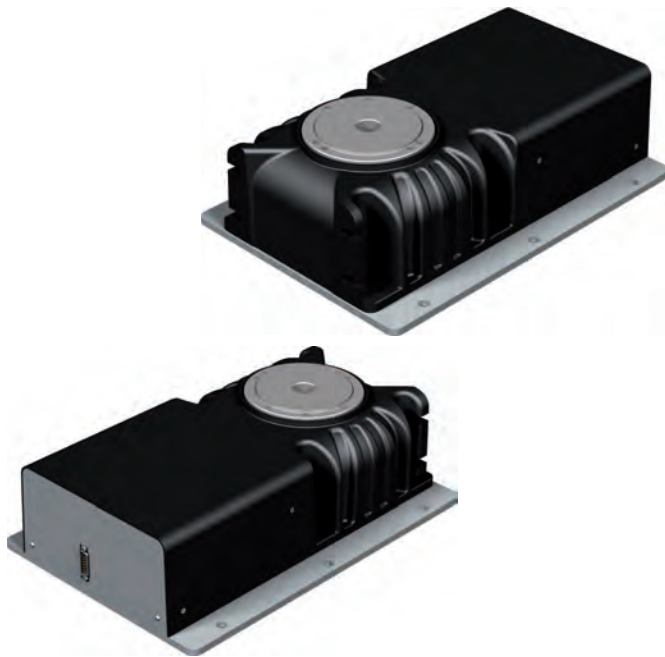


Indexing table

RF 1



Features

- Low play toothed belt drive with stepper or DC servo motor
- Reduction 1: 24 (standard)
- Weight: 14.6 kg

For pin assignment see page C122
For transport loads, see page C123

Options:

- Reduction installation set
1 : 52 or 1 : 100
- Electromagnetic brake [60 Nm]
- Step motor drive with encoder
- CNC controller

Ordering key

2 6 0 2 4 X X X 0 0

Motores

- 1 = Stepper motor MS 200 HT without encoder
- 4 = brushed DC servomotor DC 100
- 5 = brushless EC servomotor EC 60S

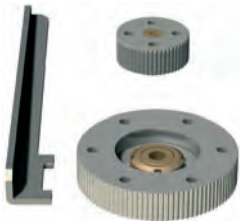
Brake

- 0 = without brake
- 1 = magnetic brake

Plug

- 1 = servomotor: M23 + SubD15
- 2 = Stepper motor: SubD9

Accessories



Installation set

for reduction 1:52

Part no.: **269077 0001**

f for reduction 1:100

Part no.: **269077 0002**

Aluminium T-key plate

Ø 240 mm/PT 25

Part no.: **269050 0240**

Ø 365 mm/PT 25

Part no.: **269050 0365**

Aluminium rotary plate

Ø 490 mm, customised fixing
borings available at extra costPart no.: **269051 0500**

Chuck assembly

3-jaw chuck Ø 125

Part no.: **269062 0125**

4-jaw chuck Ø 125

Part no.: **269061 0125**

